

● OCTOBER 2024

iowa

ELECTRIC COOPERATIVE LIVING

**Powering a brighter
future in Guatemala**

**Celebrating National
Co-op Month**

Family dinner recipes

Grundy County REC holds successful annual meeting ► See Page 5

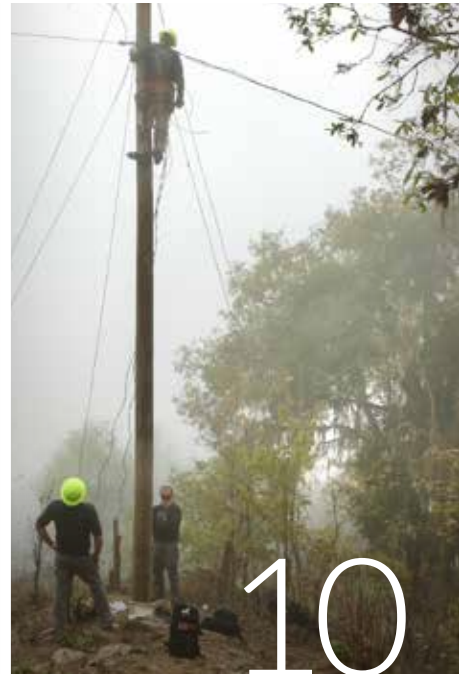
CONTENTS



6



8



10

VOLUME 77 • ISSUE 10

3

STATEWIDE PERSPECTIVE

Reflecting on our cooperative principles

3

EDITOR'S CHOICE CONTEST

Win a \$100 gift card for a local business

14

ENERGY MATTERS

Iowa Home Energy Assistance Program

15

OUT BACK

Come back to silence

EDITOR
Ann Foster Thelen

DESIGNERS
Megan Walters
Bree Glenn

IAEC DIRECTOR OF COMMUNICATIONS
Erin Campbell

IAEC EXECUTIVE VICE PRESIDENT
Leslie Kaufman

IAEC BOARD OF DIRECTORS
Kenny VandenBerg, District 1 – President
Jim Miller, District 5 – Vice President
Tony Lem, District 2 – Asst. Secretary/Treasurer
Jerry Keleher, District 3
Gordon Greimann, District 6
Bruce Amundson, District 7
Vacant, District 4 – Pending board appointment
Marion Denger, Prairie Energy Cooperative – NRECA Representative
Kevin Wheeler, Access Energy Cooperative – Managers' Representative

Iowa Electric Cooperative Living magazine (ISSN: 2770-8683) is published monthly by the Iowa Association of Electric Cooperatives, a not-for-profit organization representing Iowa's member-owned local electric cooperatives. Association address: 8525 Douglas Ave., Suite 48, Des Moines, IA 50322-2992. The phrase ***Iowa Electric Cooperative Living*** is a mark registered within the state of Iowa to the Iowa Association of Electric Cooperatives. The magazine does not accept advertising.

Editorial Office
8525 Douglas Ave., Suite 48, Des Moines, IA 50322-2992. Telephone: 515-276-5350.

Email Address
editor@ieclmagazine.com. *Iowa Electric Cooperative Living* magazine does not assume responsibility for unsolicited items.

Website
www.ieclmagazine.com

Postmaster
Send address changes to *Iowa Electric Cooperative Living* magazine, 8525 Douglas Ave., Suite 48, Des Moines, IA 50322-2992. Periodicals Postage Paid at Des Moines, Iowa, and at additional mailing offices.

Change of Address
Every local electric cooperative maintains an independent mailing list of its members, so please send your change of address directly to your local electric cooperative's office. *Iowa Electric Cooperative Living* magazine cannot make an address change for you.

© Copyright 2024, Iowa Association of Electric Cooperatives. No portion of the editorial, photographic or other content of *Iowa Electric Cooperative Living* magazine or its website may be reproduced without written permission of the editor.



ON THE COVER

The village of Las Peñas, Guatemala, where linemen from Iowa and Minnesota electric cooperatives worked to bring electricity to the community for the first time. Read more beginning on Page 10 of this issue.

REFLECTING ON OUR COOPERATIVE PRINCIPLES

BY LESLIE KAUFMAN



October is National Co-op Month, making it an opportune time to reflect on our cooperative principles. As I look back on my first few weeks

at the Iowa Association of Electric Cooperatives, the co-op principles of *cooperation among cooperatives* and *concern for community* really stand out to me for the following reasons.

Rebuilding after the Greenfield tornado

On May 21, severe storms rolled across Iowa, including a strong tornado that tore through Greenfield. We cover this story in more detail on Pages 6-7 and share how it affected employees of Farmers Electric Cooperative, which is based in Greenfield. In the aftermath of the storm, employees of Farmers Electric immediately headed out to help those in need, and neighboring electric cooperatives provided mutual aid to repair damage and restore power in impacted areas.

Powering a brighter future in Guatemala

Also in this issue, you'll read about how linemen from Iowa and Minnesota electric cooperatives worked together to bring electricity to a remote village in the Guatemalan mountains. We understand how essential electricity is to powering opportunities and improving quality of life. Electric cooperatives across the country volunteer their time and resources to help those less fortunate in developing countries because it connects us to our legacy and mission back home.

Shining the light on community volunteers

In the August and September issues of this magazine, you read about our Shine the Light contest, which celebrates our cooperative

commitment to community. Thank you for nominating deserving volunteers who make a positive difference in Iowa's communities! Learn more about our 2024 winners at www.IowaShineTheLight.com and make plans to nominate a local hero in June 2025.

October is co-op month

Once again, Iowa's electric cooperatives are teaming up with the Iowa Institute for Cooperatives and the Iowa Credit Union League to raise awareness about the many advantages of the cooperative business model. This month, we'll post videos about the seven cooperative principles and other co-op facts on social media. Visit www.IowaCooperatives.com for more information on how cooperative ownership works and why the co-op business model is effective.

Celebrating cooperative careers

Finally, we will commemorate Careers in Energy Week beginning Oct. 21. Iowa's electric cooperatives are proud to provide nearly 2,000 stable careers with excellent benefits in an exciting and fulfilling industry. Many electric co-op employees choose to raise their families in small towns and are actively engaged in their communities. Along with lineworkers, engineers and operations staff, electric co-ops also employ accountants, customer service representatives, IT professionals, human resources staff, communicators, energy advisors, economic development specialists and more. View our latest co-op job openings at www.iowarec.org.

Leslie Kaufman is the executive vice president and general manager of the Iowa Association of Electric Cooperatives.

EDITOR'S CHOICE CONTEST

WIN A \$100 GIFT CARD!

To celebrate National Co-op Month, we're giving away a \$100 gift card to your choice of a hometown business. Your selection can be a restaurant, hardware store, gift shop, grocery store, beauty salon or other local business that's vital to your community.

Visit our website and win!

Enter this month's contest by visiting www.ieclmagazine.com no later than Oct. 31. You must be a member of one of Iowa's electric cooperatives to win. There's no obligation associated with entering, we don't share entrant information with anyone and multiple entries from the same account will be disqualified.

The winner of the pressure washer from the August issue was **Dwayne Seeck**, a Guthrie County REC member-consumer.



ENTER ONLINE BY OCT. 31!

CO-OPS POWER COMMUNITIES WITH PURPOSE

BY MICHAEL GEERDES



Communities come in all shapes and sizes. Some are based on geographical proximity, some are based on shared interests or hobbies, and some communities can even be found in virtual spaces like social media

groups. Regardless of where or how they are formed, communities can bring people together and create a sense of belonging.

Grundy County REC is deeply committed to our members, and we're glad you are part of the electric cooperative community.

This month, more than 30,000 cooperatives across the U.S. are celebrating National Co-op Month. It's a time to reflect on all the aspects that set cooperatives apart from other types of businesses, but more importantly, it's a time to celebrate the power of co-op membership.

Electric cooperatives are not-for-profit utilities that are built by the communities they serve. For Grundy County REC, our mission has always been to provide you with safe, reliable and affordable power. We care about your quality of life, and because we are locally owned and operated, we're uniquely suited to meet our members' evolving energy needs.

Beyond the business of electricity, our employees and directors are equally invested in our local community. Why? Because we live here, too. That's why we work hard to support local economic development projects, youth programs and scholarships, charitable giving initiatives, and additional programs that make our community a better place to call home.

All co-ops, including Grundy County REC, are guided by seven cooperative principles that embody the values and spirit of the cooperative movement. These principles are a framework to help all co-ops navigate challenges and opportunities while remaining true to our purpose:

1 Open and Voluntary Membership: Co-op membership is open to anyone who

can use the co-op's services within Iowa's assigned service territories.

2 Democratic Member Control: Members make decisions that shape the cooperative. Why? Because co-ops are created by the members for the members.

3 Members' Economic Participation: Members contribute money to the co-op to ensure it runs smoothly now and in the future. At Grundy County REC, this happens through paying your energy bills.

4 Autonomy and Independence: Co-ops are independent and can operate on their own, which ultimately benefits the members.

5 Education, Training and Information: Co-ops continuously focus on education to ensure employees have the training and information they need to make the co-op successful.

6 Cooperation Among Cooperatives: Co-ops share with and learn from other cooperatives. We help each other out in times of need because we want other co-ops to thrive.

7 Concern for Community: All cooperatives work for the greater good of the local communities they serve. Co-ops give back to their communities to help them thrive and grow.

As we celebrate National Co-op Month and the power of membership, we hope you will recognize the many aspects that set electric cooperatives apart from other utilities. Our mission is reliable power. Our purpose is people and the local communities we're proud to serve.

Michael Geerdes is the general manager of Grundy County REC.

Be Fire Prevention Smart – don't overload electrical outlets. Learn more about keeping your home safe at SafeElectricity.org.



NATIONAL
FIRE
PREVENTION week

 **Grundy County REC**
A Touchstone Energy® Cooperative
"Our mission is to provide our members safe, reliable, electric service"



Office: Grundy County REC
303 N Park Avenue • P.O. Box 39
Grundy Center, IA 50638

Phone: 319-824-5251

Fax: 319-824-3118

Call Before You Dig (Iowa One Call):
800-292-8989

Website: www.grundycountyrecia.com

Facebook: facebook.com/GrundyCountyREC

Email: mgeerdes@grundycountyrecia.org

Office Hours: Monday-Friday, 8 a.m.-3:30 p.m.
Call our office 24/7: 319-824-5251

General Manager: Michael Geerdes

Officers and Directors:

District 1: Kevin Pruisner
District 2: Norbert Boyle
District 3: Nick Strohhenn
District 4: Larry Rohach
District 5: Matt Kopriva
District 6: Roger Brown
District 7: Jason Paper

This institution is an equal opportunity provider and employer.

THANK YOU FOR MAKING THE ANNUAL MEETING A SUCCESS

Last month's annual meeting was a huge success, once again! With nearly 300 member-consumers and guests in attendance, the staff and board of directors had a great time meeting with all those who participated. Board President Nick Strohbehn, General Manager Michael Geerdes and Board Treasurer Norb Boyle provided highlights of 2023, including Grundy County REC's accomplishments and the 2023 financials, and touched on what to expect in 2024.

We want to thank the Tama County Pork Producers, BarLea Roots Event Centre, Hansen's Dairy, Brothers Market in Grundy Center and Recreation Unlimited in Traer for their contributions of food and prizes to this year's annual meeting.

Congratulations to this year's prize winners!

- **GMG grill:** James Stanbrough
- **Yeti cooler and meat bundle:** Brittany Liekweg
- **PS5:** Ella B.



HELPING MEMBERS IN NEED

Your Touchstone Energy Cooperative has always extended a helping hand to those needing it. In response to actions by the Iowa General Assembly, your rural electric cooperative has established RECare, a program of members helping members.

RECare provides funds to be distributed by local community action agencies to help pay winter heating bills and assist in the weatherization of low-income consumers' homes.

You may make a monthly pledge that will be automatically added to your electric bill – even just a dollar a month – or a one-time contribution to help others.



RECare Consumer Authorization Form

I would like to make a (check one):

- One-time contribution of \$ _____
- Monthly contribution of \$ _____
(That will be added to my bill)

Name _____

Address _____

City _____

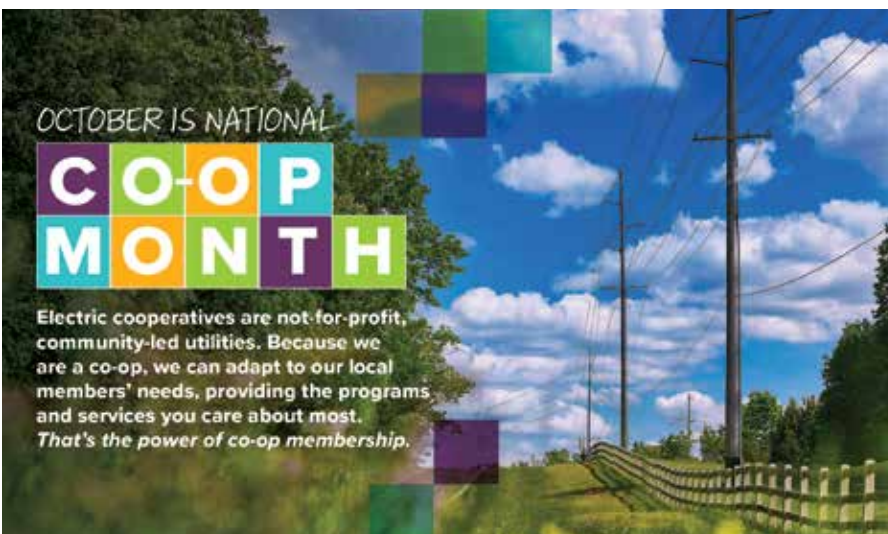
State/Zip Code _____

Phone # _____

Email _____

Account # (if known) _____

Return to Grundy County REC
303 N Park Avenue • P.O. Box 39
Grundy Center, IA 50638



GRIT AND DETERMINATION BRING AN IOWA CO-OP AND A COMMUNITY BACK FROM DISASTER

BY STEVEN JOHNSON

Sometimes the seventh cooperative principle of concern for community is more than an affirmation. It's a matter of life and death.

When a devastating EF-4 tornado swept through the tightly knit Iowa community of Greenfield on the afternoon of May 21, lineworkers and employees of Farmers Electric Cooperative left their secure, concrete-walled shelter about a mile away as soon as it was safe to do so.

As they entered Greenfield, population about 2,100, they shoved aside debris, pulled survivors from the rubble and tended to the wounded in a community that resembled a war zone.

"We talk about the cooperative principles and how we're like a family," says Holi Weston, CEO of Farmers Electric, whose family lost its century-old home to the tornado. "Tragedy just makes it real. I couldn't be prouder of this group."

The pain from one of the most violent tornadoes on record – peak internal winds topped 300 mph – is still being felt. It left five dead, destroyed or damaged more than 150 homes in Greenfield, ended the school year prematurely and rendered the city fire station and hospital unusable.

But Farmers Electric, with about 5,100 members spread across parts of six counties, is part of a community-wide effort bringing a new sense of normalcy to the spirited city.

"System-wise, we've had more damage from ice storms," says Dave Shike, a lifelong area resident and operations superintendent at Farmers Electric. "But that's a matter of going out and fixing things. The tornado had an impact beyond just the poles and the wires. You're talking about people's lives."



Silos remain twisted and torn and buildings remain damaged weeks after a tornado hit Greenfield. Support for the community has come from near and far. Photos: Steven Johnson



First rumblings

Tuesday, May 21, began with warnings of volatile weather in Adair County. Weston elected to keep her daughter Maddie, a high school junior and avid track competitor, at home, just in case. Schools released students early because of the tornado threat, the first time that longtime residents can recall such a precaution.

At Farmers Electric, which has 21 full-time employees, the co-op staff gathered as it does before any storm to monitor the potential course of severe weather and review plans for power restoration. Around 3:30 p.m., alarms went off on everyone's phones, a simultaneous cacophony of beeps and buzzes. According to

plan, the staff headed for the co-op "vault," the building's secure zone.

"We had a roll call list in the vault that we've never used before, but we did that day," says Weston, who has been at Farmers Electric since 2009 and CEO since December 2022. "You could just tell it was different."

Different indeed. The staff was in the vault for a couple of minutes at most, but in that time, Weston's husband messaged her that their street was gone. Lineworker Trey Eddy reached his wife, huddled with their two children in the basement of their damaged house. Their neighborhood was wiped out, she told him. Another call and Weston learned her father, Dennis Pickrell, was trapped with a fallen wall on his chest.

No one had time to think

Shike knew the tornado had wreaked havoc on the co-op system, but power restoration would have to wait. A group of lineworkers jumped into trucks and headed toward what was left of Southeast First and Second Streets, among them Eddy, also Weston's neighbor. Weston followed them with Marisa Pickrell, Farmers Electric work order accountant and wife of a cousin of Weston.

"When we were driving for town, I don't know that we were prepared for what the town was going to look like," Pickrell shares. "We were running over stuff but at that point, we didn't care. Let's just get there. I just kept saying, 'Oh, my God. Where is all this stuff from?'"

Gas was leaking from the hospital and homes. Residences were ripped from their foundations and scattered everywhere. The tornado had lifted Eddy's car and hurled it 100 feet away. He and other lineworkers pulled Weston's father from the caved cinder block wall to safety; he was treated for his injuries and said he could not have sustained his position much longer.

"Then the linemen just took off running," Weston says. "At that point, they weren't worried about outages. Our line superintendent wasn't worried about outages. They were worried about the people, pulling people out of basements. One of our linemen took off his sweatshirt and used it as a tourniquet on a lady's leg. They took doors and used them as gurneys. A new apprentice was sitting with a challenged adult, just sitting with him until he could get help for a head wound."

She adds, "I don't think anybody had time to think. It was just unbelievable."

The recovery process begins

After about 90 minutes, Shike made the call – crews needed to get back into the field and restore power.

"It was just a mess. We were cutting our way through lines. We had 40 poles on the ground," he says.

Mutual aid came from Clarke Electric Cooperative in Osceola as several lineworkers helped Farmers Electric clear debris and rebuild lines. A small municipal electric utility serves Greenfield, and Farmers Electric reached out to it with support and materials.

Shike says service was restored to members who could safely receive it on Friday, May 24.

"We left a lot of things on the ground to be cleaned up later," he adds. "We're still waiting on some members to decide whether they want to rebuild or go in another direction."

Weston says power restoration had practical and psychological value. "It's one thing to cross off the list. The power is on. Now we can start cleaning. Now we start cooking meals."

Shike also gained a new neighbor, as Weston's family took up residence in a cabin on his property for about two months. The north side of her house was destroyed, though her daughter's track medals remained untouched on a desk. She and her family are in a rental home until they figure out their

next move. Pickrell and her family, including two daughters, have been living with a brother, while the Eddy family lives in an empty farmhouse owned by the uncle of an electric cooperative foreman.

Relief contributions have been flowing in to deal with an estimated \$30 million in repairs, and the hashtag #greenfieldstrong has been prominent on social media. In late July, the Register's Annual Great Bicycle Ride Across Iowa (RAGBRAI), passed through Greenfield. Farmers Electric closed its office for the day to help with the event, with riders donating about \$10,000 to the Greenfield cause.

"It's been the longest and shortest few months of my life," Weston says. "I have always said that I am super thankful for this team we have. We're a pretty close team, but after the tornado, seeing how everyone supported everyone else shows you that the co-op is a family in good times and bad."

Steven Johnson is a contributing writer for the National Rural Electric Cooperative Association.



Farmers Electric Cooperative staff (from left to right) Dave Shike, operations superintendent; Mindy Comstock, billing clerk/customer service; Carol Hutchinson, customer service/accounts receivable; Holi Weston, CEO; Lori Kinyon, director of finance and accounting; Gina Meisenheimer, accounts payable/payroll; and Marisa Pickrell, work order accountant. Photo Source: Steven Johnson

Family Dinner FAVORITES

ITALIAN CASSEROLE

- ½ pound ground pork
- ½ pound ground beef
- ⅓ cup onion, chopped
- 1 medium garlic clove, minced
- ½ teaspoon salt
- ½ teaspoon oregano
- 1 can tomato soup
- ⅓ cup water
- 2 cups wide noodles, cooked
- ½ pound Velveeta cheese
- 4 ounces cheddar cheese, shredded (or more cheese if desired)

Brown pork, beef and onion together. Drain. Add seasonings to the mixture. In a large bowl, combine meat mixture with soup, water, noodles and Velveeta cheese. Place in a 9x12-inch casserole dish or a round casserole dish. Sprinkle shredded cheddar cheese around the edges of the casserole (or over the entire casserole). Bake at 350 degrees F for 30 minutes. You can also freeze prior to baking and bake later. Casserole is great served with bread sticks and a lettuce salad. *Serves 6*

Dianne Riley • Osceola
Clarke Electric Cooperative, Inc.

BBQ SANDWICHES

- 3 pounds hamburger
- 1 onion, chopped
- 1 can tomato soup
- 1 tablespoon mustard
- 1 cup ketchup
- ¼ teaspoon chili powder
- ⅓ cup brown sugar
- 3 teaspoons salt
- buns

Brown hamburger with onion, drain. Add remaining ingredients and simmer for 20 minutes. Serve on buns. *Serves 30*

Bethany Van Wyhe • Lester
Lyon Rural Electric Cooperative

LOADED BAKED POTATO CASSEROLE

- 1 pound chicken breast, cubed
- 6-8 red-skinned potatoes, cubed
- ⅓ cup olive oil
- 1½ teaspoons salt
- 1 teaspoon black pepper
- 1 tablespoon paprika
- 2 tablespoons garlic powder
- 2 tablespoons hot sauce, plus more, if desired
- 2 cups cheese, shredded
- 1 cup bacon, crumbled
- 1 cup green onion, diced

Mix the first eight ingredients and bake at 400 degrees F for 55-60 minutes. Top with cheese, bacon and green onion for the last 5 minutes of baking. *Serves 8*

Nancy Hemann • Parkersburg
Grundy County Rural Electric Cooperative



Visit www.ieclmagazine.com and search our online archive of hundreds of recipes in various categories.

CHEESY CHICKEN SPAGHETTI

- 16 ounces dry spaghetti, cooked
- 1 pound Velveeta cheese, cubed
- 2 cups chicken, cooked and chopped
- 1 can cream of mushroom soup
- 1 can cream of chicken soup
- 1 can RO-TEL tomatoes, undrained
- 1 can mushrooms, drained
- ½ cup water
- 1 small onion, diced
- salt, to taste
- pepper, to taste

Spray slow cooker with nonstick cooking spray. Combine all ingredients in slow cooker and stir to mix well. Cook on low for 2-3 hours. Stir before serving. *Serves 6-8*

**Arie Schiller • Donnellson
Access Energy Cooperative**

HEARTY HAM CASSEROLE

- 4 cups ham, cubed
- 2 cans corn, drained
- 4 cups potatoes, cooked and diced
- 2 tablespoons onion, chopped
- ½ cup butter
- ⅔ cup flour
- 3½ cups milk
- ¼ teaspoon pepper
- 2 cups cheddar cheese, shredded

In a large bowl, combine ham, corn and potatoes, set aside. Sauté onion and butter for 2 minutes. Stir in flour and blend. Add milk and pepper, then bring mixture to boil. Cook and stir for 2 minutes. Add to the ham mixture and stir. Transfer to a 9x13-inch baking dish. Cover and bake at 350 degrees F for 45 minutes. Uncover and sprinkle with cheese. Bake 5 to 10 minutes longer.

**Bonnie Boot • Pella
Pella Cooperative Electric Association**

BACHELOR'S PIE

- 2 pounds hamburger
- 1 medium onion, chopped
- 2 cans tomato soup
- 2 cans green beans or mixed vegetables, drained
- 6 cups mashed potatoes
- 2 cups sharp cheddar cheese, shredded
- salt, to taste
- pepper, to taste

Brown hamburger and onion in large skillet, drain. Combine with soup and green beans or mixed vegetables. Add salt and pepper to taste. Transfer to a 9x13-inch baking pan. Spread mashed potatoes on top (like frosting a cake) and sprinkle with cheese. Bake at 350 degrees F for about an hour or until cheese melts. *Serves 16*

**Joanne Fox • Sioux City
North West Rural Electric Cooperative**

DEVILED SWISS STEAK

- 1 3-pound beef round steak, 1-inch thick
- 2 teaspoons dry mustard
- 1½ teaspoons salt
- ¼ teaspoon pepper
- 2 tablespoons cooking oil
- 1 4-ounce can mushroom stems and pieces water
- 1 tablespoon Worcestershire sauce

Cut meat in half for easier handling. Mix mustard, salt and pepper together, then sprinkle over meat. Pound seasonings into both sides of meat. In skillet, quickly brown meat on both sides in hot oil. Drain excess fat. Drain mushrooms, reserving liquid and setting mushrooms aside. Add water to liquid to make ½ cup. Add Worcestershire sauce, then pour liquid mixture over meat. Cover and simmer 1¼ to 1½ hours on low heat or until meat is tender. Add mushrooms and heat through. Transfer meat to platter and pour remaining liquid and mushrooms over meat. *Serves 8*

**Danice Zern • Conrad
Grundy County Rural Electric Cooperative**

WANTED:

CHERRY RECIPES

**THE REWARD:
\$25 FOR EVERY ONE WE PUBLISH!**

Deadline is Oct. 31

Submit your **favorite recipes using cherries**. Please include your name, address, telephone number, co-op name, recipe category and number of servings on all submissions.



EMAIL: recipes@ieclmagazine.com
(Attach your recipe as a Word document or PDF to your email message.)

MAIL: Recipes
Iowa Electric Cooperative Living magazine
8525 Douglas Ave., Suite 48
Des Moines, IA 50322

POWERING A BRIGHTER FUTURE FOR THE PEOPLE OF LAS PEÑAS, GUATEMALA

BY ERIN CAMPBELL

Have you ever considered how different your life would be without daily access to electricity? Simple tasks like making coffee, taking a hot shower, washing clothes, refrigerating food, cooking meals or lighting a room would become nearly impossible without safe, reliable electric service.

Living without electricity was common in rural America before electric cooperatives were formed in the 1930s and 1940s, even though most people in cities and towns benefitted from the conveniences of power. Many of us are a generation or two removed from those times; however, 14 linemen from Iowa and Minnesota electric co-ops were able to experience the fulfillment of powering a brighter future for the rural village of Las Peñas, Guatemala, in June.

Through their respective statewide associations, several electric cooperatives from Iowa and

Minnesota teamed up for a rural electrification project through NRECA International, which is affiliated with the National Rural Electric Cooperative Association (NRECA). Since 1962, NRECA International has brought electricity to more than 220 million people throughout Africa, Asia and Latin America.

Working in a mountainous terrain

The team's mission was to build primary and secondary electric distribution infrastructure and wire more than 30 homes in the village of Las Peñas, nestled in mountainous terrain at an elevation of 6,000 feet above sea level.

The daily journey from Jalapa, where the linemen stayed in a hotel, to Las

Peñas took over an hour by vehicle via primitive, narrow dirt roads and switchbacks. During the rainy season, the dirt roads quickly become washed out and impassable by vehicles. Near the end of the project, they had to hike the arduous final mile on foot every day.

Las Peñas is only about 15 miles from the bustling city of Jalapa as the crow flies, but lifestyles in these two locations are vastly different.

"Close your eyes for a moment and imagine you're at a campground with the smell of wood burning. Now add the smell of the livestock barns from the county fairgrounds and the smell of tortillas cooking – that's what it was like to be in Las Peñas,"



A villager checks out electrical equipment, which will power her home.



Linemen worked on steep areas to string wire and place power equipment.

Follow the linemen's journey on our public Facebook group: [2024 Powering a Brighter Future in Guatemala](#)

explains Scott Meinecke, director of safety and loss control for the Iowa Association of Electric Cooperatives, who traveled to the village near the completion of the project.

Electricity will allow girls to attend school

Most of the families of Las Peñas farm corn, coffee beans and other crops by hand and raise pigs and chickens. The women and girls stay close to home, cooking food and tending to household chores.

“Without electricity or reliable refrigeration, girls don’t have time to go to school; they are needed at home to help grind corn and cook every day. Bringing electricity to these rural villages is especially transformative for girls because they can now complete food prep chores on the weekends and store a week’s supply of food in a refrigerator, which means they can go to school and receive an education,” Meinecke says.

Building infrastructure by hand

Before the linemen arrived, no power lines were serving the village. Villagers helped the local municipal utility set poles for the team, and they got to work immediately stringing primary wire across 3.5 miles of distribution infrastructure. Without modern equipment like bucket trucks, all the work had to be completed by hand.

Mike Berkenpas of North West REC says many of the spans in the mountains were 1,000 feet or more between poles because of the unbelievably steep terrain. For context, spans between poles in Iowa are set to a standard of approximately 200 feet. Bailey Bautsch of Maquoketa Valley Electric Cooperative was impressed with how the villagers helped the linemen pull up the wire and carried tools during the project.

The rain was challenging throughout the project, prompting the team to be thankful for the maintained roads back home.

“When it rains, you can’t get to the village without walking. The road is only built for tractors, horses and mules, and it was built 3 weeks before we got here,” explains Hunter Venz of Prairie Energy Cooperative.



Linemen from Iowa and Minnesota pose with Las Peñas villagers.

The following **Iowa electric cooperatives** and **linemen** participated in this year’s effort. Allamakee-Clayton Electric Cooperative, **Jason Donnelly**; East-Central Iowa Rural Electric Cooperative, **Brian Reidy**; Eastern Iowa Light & Power Cooperative, **Andy Koopmann**; Maquoketa Valley Electric Cooperative, **Bailey Bautsch**; Midland Power Cooperative, **Tanner Dreier**; North West Rural Electric Cooperative, **Mike Berkenpas**; Prairie Energy Cooperative, **Hunter Venz**.

When the linemen finished wiring more than 30 homes for electricity, it was time to celebrate.

“June 18 was supposed to be the inauguration and lighting ceremony; however, we finished a few days early, so we loaded up water filters and the things we bought for the villagers to help make their lives easier. We met them about halfway down the mountain since driving on the road was still too dangerous. We had a small ceremony on the road and thanked them for all their help over the past days we were onsite,” shares Brian Reidy of East-Central Iowa REC.

“Their mayor gave a speech, thanking all who were involved in the long process to get power to the village over the past several years. We handed out the things we brought and said our goodbyes, loaded the remaining gear and headed back up and off the mountain for the last time. What a memorable and humbling experience – I’m not sure words could ever articulate what we experienced.”

Electricity is a doorway to opportunity

As the linemen shared photos of the project and the village, a young boy standing outside the doorway of his home as a lineman wires it for electricity is a metaphor for how electricity provides a doorway to new opportunities for the next generation.

Electrification transformed rural America over 80 years ago, and today, it’s happening in remote Guatemalan villages as they gain access to electricity. Electricity provides access to safer cooking and lighting, easier chores, safer food and water, higher-quality education, better healthcare and more. Participating in these international electrification projects connects us even more to our cooperative mission of powering lives and empowering communities.

Erin Campbell is the director of communications for the Iowa Association of Electric Cooperatives.



A young boy stands outside as his home is wired for electricity.



Scan the QR code to watch the project video.

WHY WE LOVE THE CO-OP BUSINESS

In honor of October being National Co-op Month, some of the staff and directors of Grundy County REC shared why they enjoy working at or serving the cooperative. Visit Grundy County REC's Facebook page throughout the month to hear from other staff and directors and learn more about the cooperative's history!



"I appreciate the freedom of working outdoors and the hands-on challenges it brings. With an electric cooperative, I get to stay active and make a real impact on the community."

Aaron Bird
First Class Lineman

"I enjoy working at Grundy County REC because it feels like being part of a close-knit family. The camaraderie with co-workers, being able to engage and interact with our members, and the meaningful work we do all contribute to a fulfilling experience. There's a real sense of purpose knowing that we're not just providing a service, we're directly improving the quality of life for the people in our community."

Karl Nielsen
Foreman

"For the last 31 years, I have tried to make the lives of our members better. Grundy County REC has accomplished this to the highest degree. That is what I enjoy, and it is what keeps me going."

Larry Rohach
Board Director



"I chose to get more involved with my local electric co-op because I like giving back. Grundy County REC does an excellent job keeping my lights on reliably, safely and affordably; the least I can do for the members is serve on this board to ensure that the co-op continues to serve the membership the way they deserve."

Matt Kopriva
Board Director



"I like my job at Grundy County REC because I get to do a little bit of everything from handling solar inquiries and managing rebates to meeting with members. I also work with new technologies like metering systems and load control equipment, which keeps things interesting and fast-paced."

Brady Codner
Member Service Advisor



"I am proud to be a member and director of Grundy County REC as we are member-owned and member-governed. The co-op exists to serve our members, and I keep that top of mind as a director. Providing safe and reliable electric service is vital to our communities and local economies. It is humbling to be a part of something so important."

Jason Paper
Board Director



"I'm happy to be back in the area I grew up and back at the co-op where I was able to work as a 1,000-hour employee. We have a great crew, and I look forward to building my career here."

Ben Waltersdorf
Apprentice Lineman



"I enjoy working somewhere where people truly enjoy what they do and who they work with. It's a place that takes pride in its work, and I'm proud to be a part of it."

Erik Freese
Operations Manager



"Working for an electric cooperative is extremely fulfilling because it's all about serving our community and making a tangible difference in people's lives. Here, we're not just providing power; we're building stronger connections and contributing to the well-being of our members. It's rewarding to see the impact of our work and know that we're part of something that genuinely benefits the people we serve."

Mike Geerdes
General Manager

"Serving as a director is important as we make decisions that shape and guide the co-op. We make a difference locally, keeping members' best interests in mind. We provide guidance on big decisions for the co-op that, in turn, benefit the larger community. We are going to need increased electricity to power our lives in the future."

Norb Boyle
Board Director



"I enjoy working at Grundy County REC because I like the challenges and our team approach. The benefit of being a lineman always keeps me thinking on my feet. You can learn from everyone here; I know I have."

Derek Snakenberg
Apprentice Lineman



"Being a director of an electric co-op is vital because we represent our community, ensuring our operations align with the members' needs. We maintain local control, provide strategic oversight, advocate for our members and help ensure high-quality service. The position requires a commitment to good governance, transparency and cooperative principles."

Nick Strohhenn
Board Director



"Being able to work with a close-knit group of coworkers and for an organization that works for its members versus focusing on huge profits is something I didn't have before coming to Grundy County REC. Since working here, I've developed relationships and friendships with members and those I work with daily. I feel truly blessed to be a part of Grundy County REC and live in the same community where I work."

Allyson Miller
Executive Assistant/Human Resources



"Being fairly new to the co-op, I've really enjoyed working with a great group of coworkers and the positive culture Grundy County REC fosters and encourages."

Melodie Wittgreve
Member Service Representative



"Serving as a co-op director really sheds light on what I thought was a simple business. As a consumer, we need electricity to maintain our quality of life, and everything we use needs electricity, but we never think about it until we don't have it. Being on the co-op board exposes you to the behind-the-scenes functions of how power is created, transported and regulated. I have learned how important it is to have local management and governance of the co-op, which impacts every member 24 hours a day, 365 days a year. The members are supported by local people from our communities who are also members that care about the co-op and its responsibility to everyone on Grundy County REC's power lines."

Roger Brown
Board Director



United States Postal Service
Statement of Ownership,
Management and Circulation

1. **Publication title:** *Iowa Electric Cooperative Living*
2. **Publication number:** 269-260
3. **Filing date:** 8/12/2024
4. **Issue frequency:** Monthly
5. **Number of issues published annually:** 12
6. **Annual subscription price:** N/A
7. **Complete mailing address of known office of publication:** 8525 Douglas Avenue, Suite 48, Des Moines, Polk County, IA 50322-2992; Contact person: Leslie Kaufman; Telephone: 515-276-5350
8. **General business office of publisher:** Same as above.
9. **Full names and complete mailing addresses of publisher, editor and managing editor:**
 Publisher – Leslie Kaufman, EVP
 Iowa Association of Electric Cooperatives, 8525 Douglas Avenue, Suite 48, Des Moines, Polk County, IA 50322-2992;
 Editor – Ann Thelen, same address as above; Managing Editor – N/A.
10. **Owner:** Iowa Association of Electric Cooperatives, 8525 Douglas Avenue, Suite 48, Des Moines, Polk County, IA 50322-2992
11. **Known bondholders, mortgagees and other security holders owning or holding 1 percent or more of total amount of bonds, mortgages or other securities:** None
12. **Tax status:** The purpose, function and nonprofit status of this organization and the exempt status for federal income tax purposes has not changed during the preceding 12 months.
13. **Publication title:** *Iowa Electric Cooperative Living*
14. **Issue date for circulation data:** August 2024
15. **Extent and Nature of Circulation:**

	Average no. copies each issue during preceding 12 months	No. copies of single issue published nearest to filing date
a. Total no. of copies	55,886	55,975
b. Paid/requested circulation:	55,169	55,257
(1) Mailed outside-county mail subscriptions stated on PS Form 3541		
c. Total paid distribution	55,169	55,257
d. Free or nominal rate distribution:		
(3) Free or nominal rate copies mailed at other classes through the USPS	573	564
e. Total free or nominal rate distribution	573	564
f. Total distribution	55,742	55,821
g. Copies not distributed	144	154
h. Total	55,886	55,975
i. Percent paid	98.97%	98.99%
16. **Electronic Copy Circulation:** 0
17. **Publication of Statement of Ownership:** Printed in the October 2024 issue of this publication.
18. **Signature and title of editor, publisher, business manager or owner:** Leslie Kaufman, Executive Vice President (8/12/2024). I certify that all information furnished on this form is true and complete.

DETAILS RELEASED FOR IOWA HOME ENERGY ASSISTANCE PROGRAM



The 2024-2025 Low-Income Home Energy Assistance Program (LIHEAP) has been established to help qualifying low-income Iowa homeowners and renters pay for a portion of their primary heating costs for the winter heating season. The assistance is based on household income, household size, type of fuel and type of housing.

Besides meeting the income guidelines, you must furnish the Social Security numbers of all household members and a copy of recent heating and electric bills. You also must show proof of income for all household members age 18 and older. If you receive alimony or child support, it will need to be verified too.

If you're a wage earner, you should bring copies of your check stubs for the 30-day period before the date of application or a copy of your federal income tax return. If you're self-employed or a farmer, provide a copy of your most recent federal income tax return. And if you're on a fixed income – Social Security Benefits, Supplemental Security Income, Family Investment Program (FIP), Veteran's Assistance, Unemployment Insurance and pensions – take copies of check stubs from the last 30 days. For FIP recipients, bring your current DHS

Notice of Decision or contact your local office for acceptable document information.

In Iowa, applications for the program will be accepted on a first-come, first-served basis from Nov. 1, 2024, through April 30, 2025. The start date is Oct. 1, 2024, for elderly (60 and over) and/or disabled applicants. If you're not sure where to apply, visit hhs.iowa.gov/programs/programs-and-services/liheap. To contact your local community action agency, call 211 or write: LIHEAP, Iowa Department of Health & Human Services, Capitol Complex, Des Moines, IA 50319.

Income Maximums	
Household Size	Annual Gross Income
1	\$30,120
2	\$40,880
3	\$51,640
4	\$62,400
5	\$73,160
6	\$83,920
7	\$94,680
8	\$105,440

Note: For households with more than eight members, add \$10,760 for each additional member.

COME BACK TO SILENCE

BY DARCY DOUGHERTY MAULSBY

Here on the farm, harvest is one of the busiest times of the year. Days are short, to-do lists are long, and it's always a race against time and the weather to get the corn and soybeans in the bin.

Machines provide a constant soundtrack to all this activity. Everywhere you turn, the roar of combines, tractors, semi-trucks and grain dryers never wanes. As much as I love this exciting time of year, my thoughts turn to something I heard a speaker address this past summer.

That young man is a pastor and an avid outdoor enthusiast who cherishes his annual summer trip to the Boundary Waters Canoe Area Wilderness (BWCAW). Located in northern Minnesota, this massive area contains more than 1,200 miles of canoe routes, 12 hiking trails and 2,000 campsites.

"This wilderness offers freedom to those who wish to pursue an experience of expansive solitude," proclaims the U.S. Forest Service on its website.

Hmmmm, expansive solitude. What an intriguing concept.

The young man noted it's illegal to have a motor running in the BWCAW. What a stark contrast to daily life. Nearly everywhere you go, there's a motor running, from the car engine to the hum of the refrigerator or the whirl of a fan.

"For most of human history, people weren't overwhelmed with noise," the young man added. "Our souls aren't designed to be inundated with noise. We need to withdraw from the world periodically and seek more silence."

Turn down the volume

Consider the remarkable phenomenon that transforms people when they spend time in the BWCAW. The newbies seem agitated

for the first few days without all the electronic distractions that dominate modern life. After a couple of days, however, a "wilderness detox" kicks in.

The young man noted that his buddies who go with him to the BWCAW start enjoying life at a slower pace. It's not unusual to see them sitting by the campfire, just watching the flames, mindlessly poking the ashes with a stick. They are content.

"When we learn how to be quiet and listen, something deep inside us awakens," the young man said. "Our spirit is alert and paying attention."

The true power of silence emerges in the space it creates for reflection and understanding. Silence becomes a source of great strength.

Commit to listening

Silence can be uncomfortable, however, because we don't practice it.

Valuing silence also requires you to answer some key questions. Whose voice is the loudest in my life? What voices do I need to turn down? How can I listen for those gentle whispers that matter most?

It's possible to carve out silence, even in our chaotic, noisy world. The young man who savors the silence of the

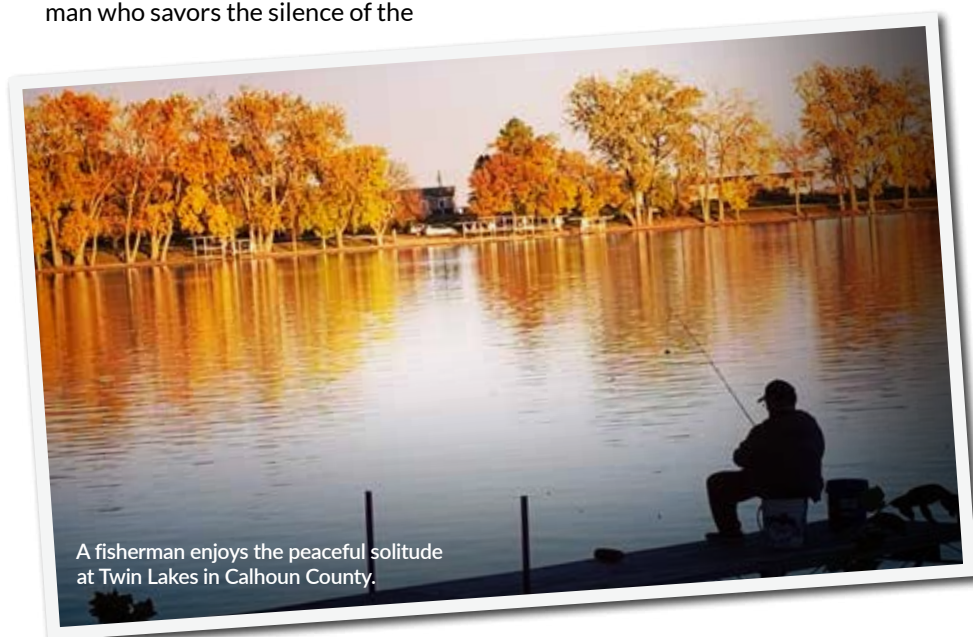
BWCAW urges us to accept one of these three challenges this week:

- 1 Enjoy silence next time you're traveling in your vehicle.** That means no music, phone calls, talk radio or podcasts.
- 2 Seek silence under the stars.** Go outside, and gaze at the night sky. Marvel at the beauty and grandeur of the heavens.
- 3 Carve out 5 minutes for silence each day.** Sit quietly in the morning before your day begins or take 5 minutes in the evening just to breathe, calm down and experience the silence. Set a timer on your phone so you don't have to watch the clock.

While these might seem challenging at first, pick one and give it a try. Once you do, seeking silence will become like water or air – essential to your very existence.

Silence allows us to channel our energies, provides the clarity we need to face challenges and calms our soul. That's a bountiful harvest indeed.

Darcy Dougherty Maulsby lives near her family's Century Farm northwest of Lake City. Visit her at www.darcymaulsby.com.



A fisherman enjoys the peaceful solitude at Twin Lakes in Calhoun County.



The magazine
for members of
Iowa's electric
cooperatives.

October 2024

IOWA ELECTRIC COOPERATIVE LIVING

Visit our website at www.grundycountyrecia.com

I AM THE CO-OP

The information we get from our Touchstone Energy cooperative about efficiency, safety and technology gives us the power to make informed decisions.

Visit TouchstoneEnergy.com to discover the power of your co-op.

YOUR SOURCE OF POWER. AND INFORMATION.



Touchstone Energy
Cooperatives